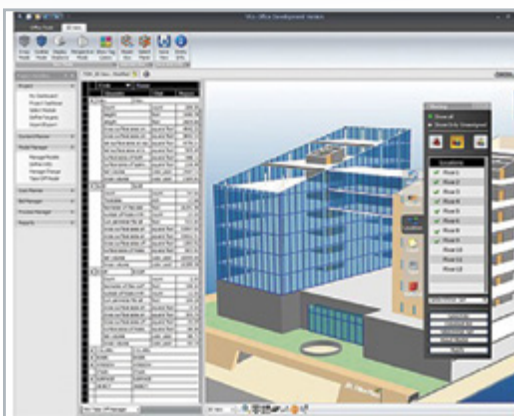


Trimble GCEstimator Suite

With the rise of BIM and 3D model inputs, project portfolios are more complex than ever. That's why Trimble set out to transform the way smart contractors estimate. Trimble GCEstimator™ Suite is a quantity takeoff and estimating solution that integrates cost analysis for both model and non-model based projects. With a single knowledgebase that captures your company's tried and true estimating methods, your work will be delivered faster and with absolute confidence.



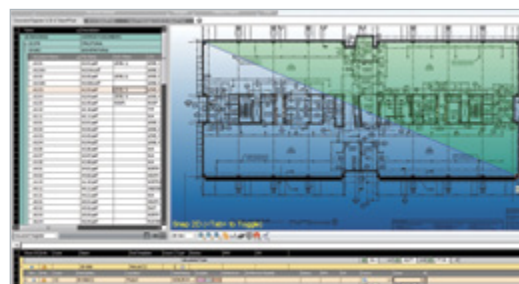
2D / 3D Takeoff

Generate quick and highly accurate model and location-based quantity takeoffs derived from 3D models created with leading BIM authoring tools. Once the model has been published, a unique geometry analysis algorithm is used to scan the 3D model content and automatically creates takeoff items, each with a

defined set of construction-caliber quantities required for construction cost and schedule planning.

The ability to view the takeoff items in the context of the 3D model, and the bi-directional link between the views, gives you clear feedback, improves team communication, and gives you the confidence that no quantities are missed. Since quantity takeoff is a live view, newly published and activated model versions result in automatically updated quantities.

Now you can use Trimble GCEstimator to perform 2D takeoff from electronic plans. It's understood that every project still requires some amount of takeoff from 2D PDF files. With GCEstimator, you can now do a highly visual takeoff from 2D electronic plans and just like the 3D model takeoff, you can even organize your 2D takeoff quantities by location / zones.



Highly visual 2D quantity takeoffs from electronic plans, organizing your takeoff into locations / zones.

Key Features:

- One visual quantity takeoff environment for 3D & 2D quantity inputs
- One database capturing your estimating best practices
- One flexible estimating spreadsheet for price adjustments and reporting

The takeoff capabilities provide the ultimate in flexibility – you can even perform a “hybrid” 2D / 3D takeoff from the BIM model.

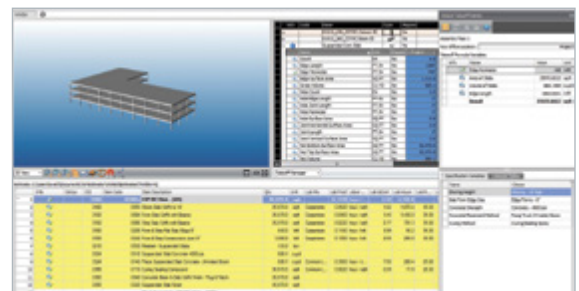
Integrated Takeoff with Estimating

Why not have your database driven estimating solution fully integrated with your quantity takeoff tools? With Trimble GCEstimator, you have exactly that. One database of your items and assemblies right alongside your 3D BIM quantities and your 2D electronic plan takeoff.

Simply drag and drop quantities directly to your item and assembly dimensions. Once you do, the dimensions are dynamically linked to the object properties. That link creates an important connection, alerting you to quantity changes as the design evolves.

GCEstimator allows you to save the relationship between your estimating items and assemblies, not only for the current estimate, but also for future projects, further reducing the time spent performing quantity takeoffs.

Quantity takeoff and estimating are so tightly integrated, that if you have organized your quantities by location, you can choose to create an estimate with a breakdown of costs for each location.



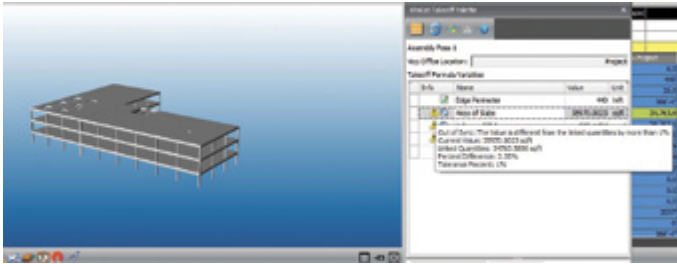
Answer your item and assembly dimensions at the same time you are visualizing your 3D & 2D quantities.

Change Management

Trimble GCEstimator allows GCs to perform four very important time saving tasks: (1) Compare 2D drawing sets to find changes between the versions; (2) Compare 3D model versions locating and highlighting changes; and (3) Compare the contract documents to the coordinated 3D models; and (4) Update takeoff quantities for those to reflect the current quantities in the current iteration of the model.

This solution is all about providing you with confidence in your estimate, and the quantities that drive that estimate. Confidence is built by allowing you to visualize the differences between two versions of the model, as well as highlight the differences with an updated 2D plan set.

It's not enough just to locate differences between multiple iterations of the model. How do you keep the estimate in sync with the current version of the model or 2D plan sets? Because 5-10 changes in building objects could render 50-100 items in your estimate obsolete, GCEstimator has the solution. When quantity differences exceed your tolerance level you are shown which items and assemblies in your estimate that are impacted by that change. You are given the opportunity to review those changes and instantly update the estimate.



GCEstimator keeps the estimator in control. You determine what represents change that is significant enough to alert you. The result, a more accurate estimate that reflects the current iteration of the design.

Database Driven, Flexible Spreadsheet for Estimate Presentation and Modification

Trimble GCEstimator provides database-driven estimating solution that allows you to estimate using your company's tried and true estimating methods. The key to success with GCEstimator's solution is that it looks and feels just like Excel with familiar Windows navigation, including drop-down menus and ribbon bars.

Behind the covers of the Excel-like interface is a powerful database, flexibly presented with multiple work-breakdown structures (WBS) and filters. Even the filters can be customized to your firm's preferences so that estimating data can be sliced and diced and presented in any way, shape or form.

Estimates can be standardized for multiple project types so that your team always delivers polished, professional estimates that reflect your corporate brand. The estimate templates are not just skin deep – it extends to the item and assembly level, as well as to labor and equipment rates, including base rates and benefit rates. With this level of detail, your company's intellectual property is well-protected. Should a key employee leave, they're not taking the company's estimating expertise with them – it is encapsulated with your templates. This protection is far better than relying on five-year-old spreadsheets riddled with assumptions and broken links. Now you can standardize estimating best practices for all your project types and self-perform work.

WBS	Item	Description	Quantity	Unit	Unit Price	Unit Cost	Material	Rate	Total	Grand Total
1.0	1.0	FOUNDATION								
1.1	1.1.0	Standard Foundation	25320.0	SF	0.0000	0.00			0.00	0.00
1.1	1.1.0.1	18\"	488.2	SF	0.0000	0.00			0.00	0.00
1.1	1.1.0.2	12\"	1143.8	SF	0.0000	0.00			0.00	0.00
1.1	1.1.0.3	6\"	1928.0	SF	0.0000	0.00			0.00	0.00
1.1	1.1.0.4	4\"	3756.0	SF	0.0000	0.00			0.00	0.00
1.1	1.1.0.5	2\"	7512.0	SF	0.0000	0.00			0.00	0.00
1.1	1.1.0.6	18\"	488.2	SF	0.0000	0.00			0.00	0.00
1.1	1.1.0.7	12\"	1143.8	SF	0.0000	0.00			0.00	0.00
1.1	1.1.0.8	6\"	2287.6	SF	0.0000	0.00			0.00	0.00
1.1	1.1.0.9	4\"	4575.2	SF	0.0000	0.00			0.00	0.00
1.1	1.1.0.10	2\"	9150.4	SF	0.0000	0.00			0.00	0.00
1.1	1.1.0.11	18\"	488.2	SF	0.0000	0.00			0.00	0.00
1.1	1.1.0.12	12\"	1143.8	SF	0.0000	0.00			0.00	0.00
1.1	1.1.0.13	6\"	2287.6	SF	0.0000	0.00			0.00	0.00
1.1	1.1.0.14	4\"	4575.2	SF	0.0000	0.00			0.00	0.00
1.1	1.1.0.15	2\"	9150.4	SF	0.0000	0.00			0.00	0.00
1.1	1.1.0.16	18\"	488.2	SF	0.0000	0.00			0.00	0.00
1.1	1.1.0.17	12\"	1143.8	SF	0.0000	0.00			0.00	0.00
1.1	1.1.0.18	6\"	2287.6	SF	0.0000	0.00			0.00	0.00
1.1	1.1.0.19	4\"	4575.2	SF	0.0000	0.00			0.00	0.00
1.1	1.1.0.20	2\"	9150.4	SF	0.0000	0.00			0.00	0.00
1.1	1.1.0.21	18\"	488.2	SF	0.0000	0.00			0.00	0.00
1.1	1.1.0.22	12\"	1143.8	SF	0.0000	0.00			0.00	0.00
1.1	1.1.0.23	6\"	2287.6	SF	0.0000	0.00			0.00	0.00
1.1	1.1.0.24	4\"	4575.2	SF	0.0000	0.00			0.00	0.00
1.1	1.1.0.25	2\"	9150.4	SF	0.0000	0.00			0.00	0.00

FEATURE DETAILS

- Quantity Takeoff**
 - 2D, 3D and hybrid quantity takeoffs
 - Location based quantities
 - Quantities visually verified and/or edited in 3D
 - Construction-caliber quantities
 - Support for SketchUp, Tekla, Autodesk Revit, Autodesk AutoCAD, ArchiCAD, IFC, CAD-Duct, Bentley AECOsim models
- Integrated Takeoff & Estimating**
 - Drag and drop 2D & 3D quantities to item and assembly dimensions
 - Create estimate reflecting quantities by location
 - Save relationship between estimating database and object and property library
 - Support for dual monitor environment, takeoff environment on one monitor & updated cost estimate on another monitor
 - One mouse click to current estimate totals
- Change Management**
 - 2D drawing version analysis/comparison
 - 3D model version comparison
 - Reference planes for a hybrid 2D/3D view
 - Issue/RFI creation and tracking
 - Project data organization
- Cost Estimating**
 - Collaborative estimating environment, multiples estimators working on the same estimate at the same time
 - Flexible spreadsheet for WBS sorting and reporting
 - Unlimited number of user-defined estimate views
 - Database edits limited to database administrators
 - Complete audit history for every item in the estimate